

CERTIFICATE OF LOCATION OF GOVERNMENT CORNER

EAST 1/4 Corner of Section 18, Township 105, Range 42, 5TH P.M.

STATE OF MINNESOTA, County of MURRAY

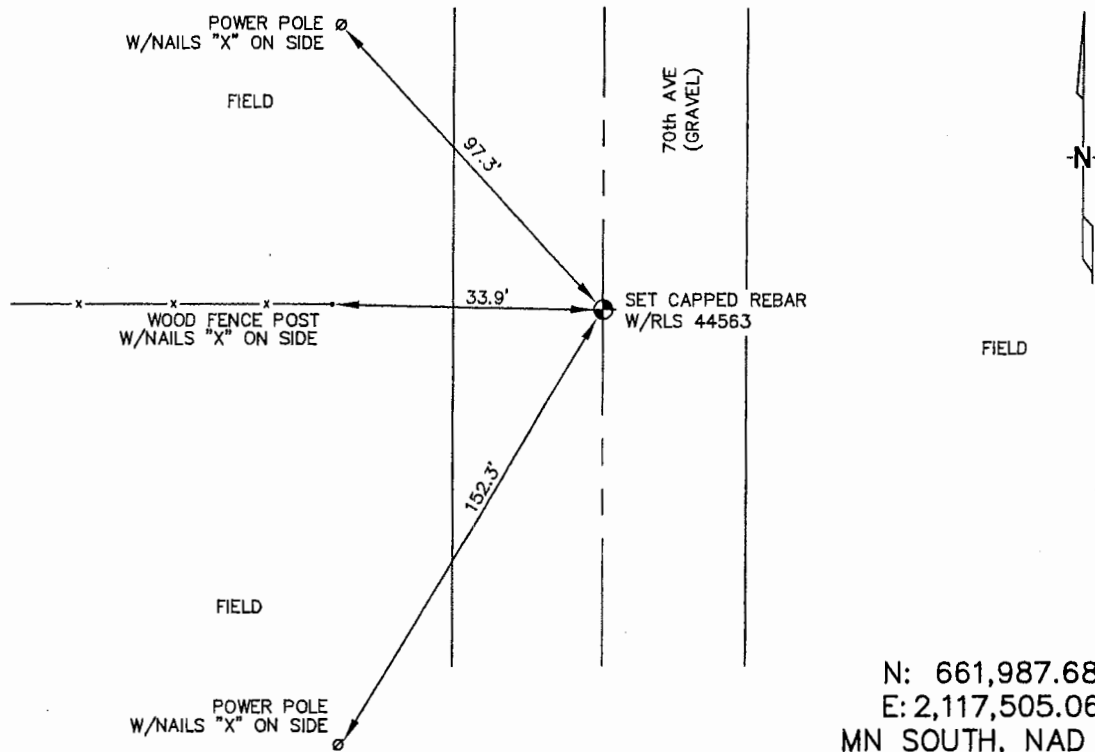
At the corner location shown on the sketch :

On 3/15/2006 found PK NAIL IN THE GRAVEL ROAD.

left monument as found, lowered monument, removed monument (explain)

On 3/15/2006 set 5/8" REBAR WITH CAP: RLS 44563.
OPPOSITE FENCE LINE RUNNING WEST.

Sketch of reference ties



N: 661,987.68
E: 2,117,505.06
MN SOUTH, NAD 83
NOT TO SCALE

Statement of evidence relative to this corner location is on back page

I hereby certify that this document and the data contained herein was prepared by me or under my direct supervision.

Thomas V. Zeff 6/29/06
Thomas V. Zeff Date

Registration No. 44563

- Land Surveyor, Professional Engineer
- County Surveyor, County Engineer

OFFICE OF THE COUNTY RECORDER

County of _____

SEP 28 2006

I hereby certify that this document was filed in the Co. Recorders office at _____ .M. on the day of _____ A.D. , 20

County Recorder James V. Johnson
By _____, Deputy

DOCUMENT NO. _____

STATEMENT OF EVIDENCE:

EAST 1/4 CORNER, SECTION 18, T. 105 N., R. 42 W.,
MURRAY COUNTY, MINNESOTA

- 1861 D.W. Wellman & S.S. Smoot, US. Deputy Surveyors, monumented corner.
- 4/25/1901 Murray Co., found 18"X22"X40" stone; no ties.
- 3/15/2006 Ulteig Engineers, Inc., Survey Crew, Brain Payne Party Chief, found a PK nail in the gravel road.
Set 5/8" rebar w/ cap: RLS 44563.
Ties: NW-97.3' to nailed "X" in power pole;
W-33.9' to nailed "X" in fence post;
SW-152.3' to nailed "X" in power pole.